

INTRODUCTION TO HYGC PROGRAM FOR DETERMINATION OF THE TIME OF RAINFALL GRAVITY CENTER

S.S. Khalighi, E. Shiva

Faculty Natural Resources University of Tehran, Teheran, Iran
sh_khaligh@yahoo.com

The hyetograph gravity center is one of the important parameters used to determine the lag time of the basin. Determination of this parameter is difficult because of high temporal variety of precipitation. So in most of the cases the gravity center is assumed in the middle of rainfall duration. HYGC program provided to solve this problem.

HYGC is a program for determining Hyetograph Gravity Center, which is written in "Basic" programming language. Based on the program, the total temporal gravity center is determined as a momentum of the rainfall component around X and Y axis. The program has the capability to avoid wrong input numbers entered as the data. The outputs consist of rainfall hyetograph and its gravity center shown on the graph and its coordinates. One of the program outputs is shown in the Figure.

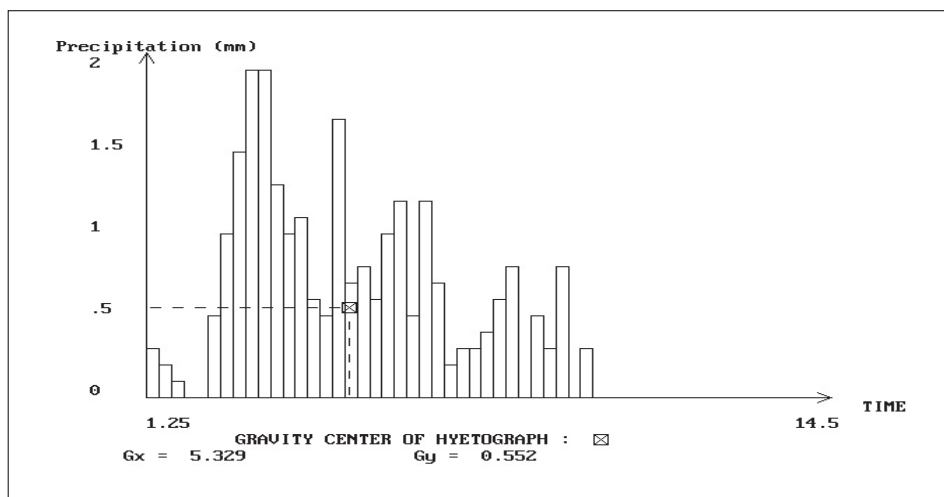


Figure Program output to determine the hyetograph gravity center of rainfall at 1992/01/13 in Oshnavieh in Iran

